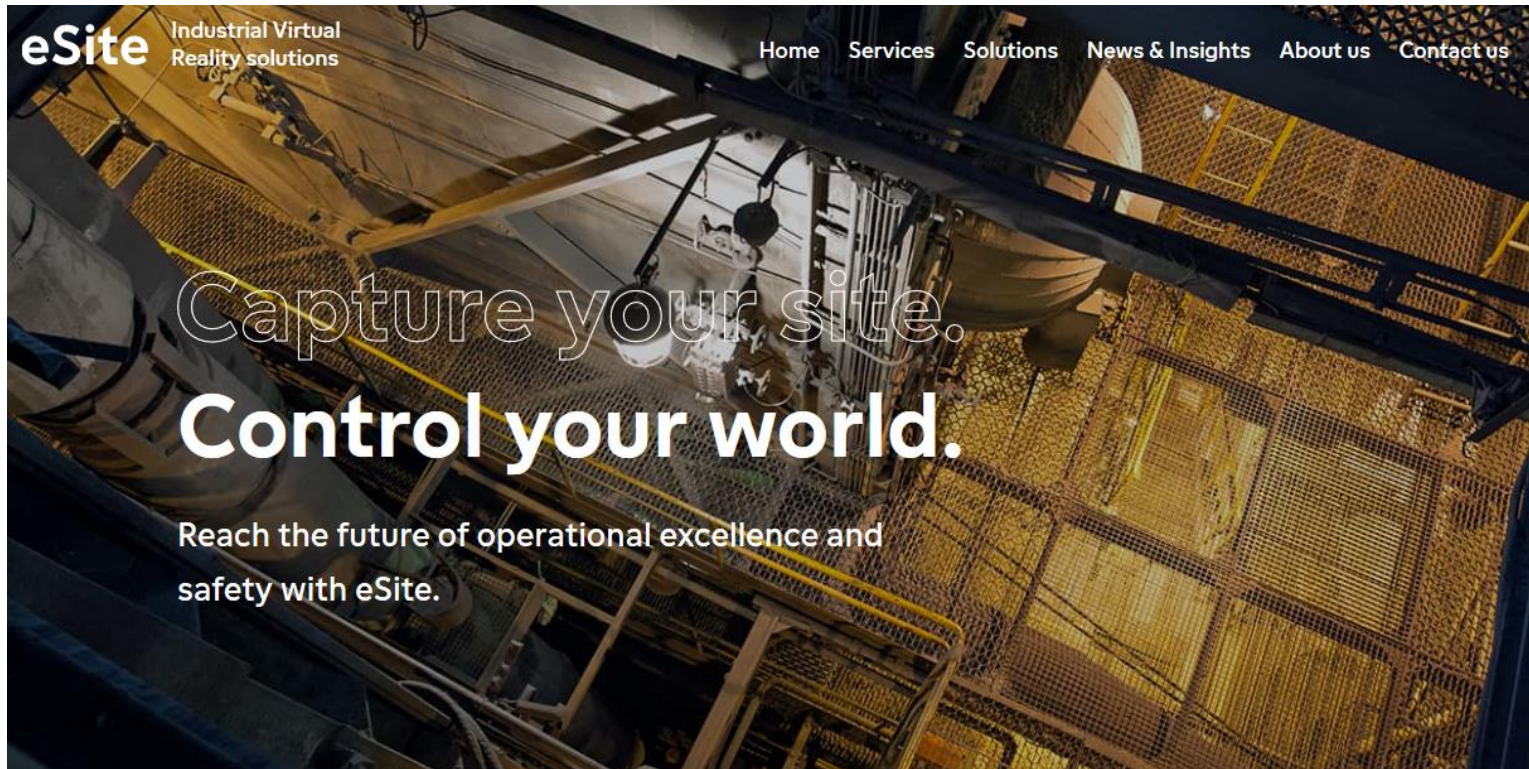


# Together with partners. We help people work remotely at industrial sites!

Operational excellence and safety during times when visiting the site is not the option



Follow us:

[www.esitevr.com](http://www.esitevr.com)

[Follow in LinkedIn](#)

# eSite – unique combination of industry experience and digital solutions

- **25 + years of industry experience**
  - Experience of developing digital solutions for different industries
- **100's of technology solutions and use cases** from the past 4 years
  - Proven, high value, state of the art digital solutions that have been developed by industry professionals for industrial professionals

## Deep understanding of Industrial Operations and Virtual Reality

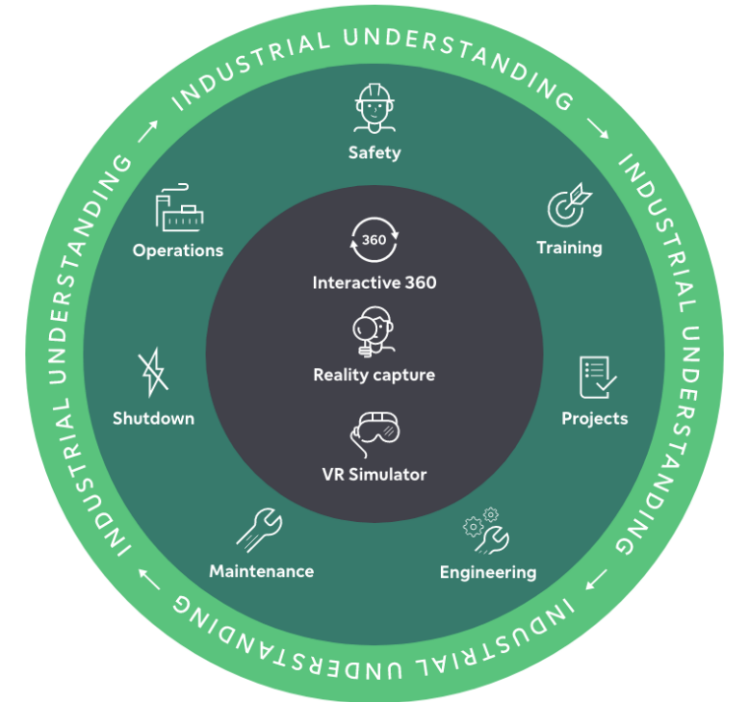
When you need to take another look at your work or travelling to your site is not an option, we bring your site to you. Instant and easy access to the systems, structures, and components at your site as well as expert consultation on industrial work procedures deliver better projects, time savings, improved safety, and cost-effectiveness – operational excellence in short.

[Our services](#)

## Another look at your site

We deliver solutions that make it possible for you and your team to take another look at your site – just like in reality. Increase your competitiveness to a new level with Interactive 360, VR Simulators, and Reality Capture.

[Our industrial solutions](#)



# Contact us for more details, use cases and references!



**Miko Olkkonen**  
Head of eSite

25 + years of international industrial experience and digital solutions

+358 40 518 7535

<https://www.linkedin.com/in/miko-olkkonen-29346134>



**Jere Luukkanen**  
Industrial sales and design lead

30 + years of hands on industry experience and strong design thinking

+358 400 753 707

<https://www.linkedin.com/in/jereluukkanen/>



**Joakim Bergroth**  
VR Product Lead

HFE-Expert, father of Fortum's VR control room simulators

+358 40 356 0264

<https://www.linkedin.com/in/joakim-bergroth-04412a3/>

# An urgent problem – that has been a long-term opportunity

Visiting sites physically is not any more the preferred choice!

100 %  
of industrial  
plants restrict  
access to their  
site



- Operators lack critical support
- Projects get delayed
- New people and visitors are a safety risk
- Maintenance costs increase

*“Executives everywhere are thinking through the contours of the next normal.”*

– McKinsey and many more [Link](#)

**ALL PLANTS**

*have been forced to restrict visits*

**WHILE**

*others have longer taken own initiative to improve their operations through digitizing their plants*

# A slide presented in PSK seminar 27.4.2017

- Everybody works remote
- Numerous short web meetings
- Simulation makes engineering more efficient
- People in my project are "Some Natives"
- The project team visits the site daily
- People collaborate and communicate through the virtual site
- We have real time live connection to field workers



Urgent need to work  
at the site remotely

**100 % of engineers in Finland lived this day in  
April 2020 during COVID-19**

## "Normi päivä" projektissani vuonna 2018

- Kollegani ja osallistuvat yritykset kaikki työskentelevät etänä. Itse työskentelen suurimmaksi osaksi kotoa käsin
- Lukuisia pieniä fokuoituneita projektipalavereja päivässä (kaikki video tai web-palavereina)
- Suunnittelun nopeus, kustannukset ja laatu on dramaattisesti parantunut automaation ja simuloinnin ansiosta
- Suurin osa projektihenkilöstöstä on "some natiiveja": suosivat lyhyttä chat keskustelua kömpelöiden sähköpostien sijaan
- Kaikki projektin henkilöt käyvät päivittäin rakennustyömaalla 360 videoiden avulla. Videoiden sisällä käydään myös keskusteluja ja ratkotaan ongelmia.
- Kommunikoin reaaliajassa asennusmiesten kanssa ja tuen heidän työtä AR-kypärän välityksellä (Skype tapainen yhteys oman koneen näytöltä kenttäyöntekijän visiirille)



10

# The obvious solution is a digital twin of the physical site

When visiting the site is not an option, eSiteview brings the site to you

## Support Service providers

Valmet

VOITH

ANDRITZ

## Engineering support

AFRY

SWECO

wood.

ECHO Engineering

# eSite



## Own operations staff

- Operators
- Shut down planners
- Safety
- Production planners
- Logistics

## Supporting contractors

- Maintenance contractors
- Scaffolding contractors
- Construction and erection contractors
- Waste management
- Raw material providers
- Etc.

## Other stakeholders

- Corporate functions
- Clients (marketing, quality assurance)
- Authorities
- Security organizations

fortum

# eSiteview digital twin: better O&M and better rebuild projects

## Operating data visualized on top of a realistic view of the mill

eSiteview is a familiar and intuitive user interface for non expert users to visualize high value process data to improve operation and maintenance functions at the mill

## Successful scheduled shutdowns

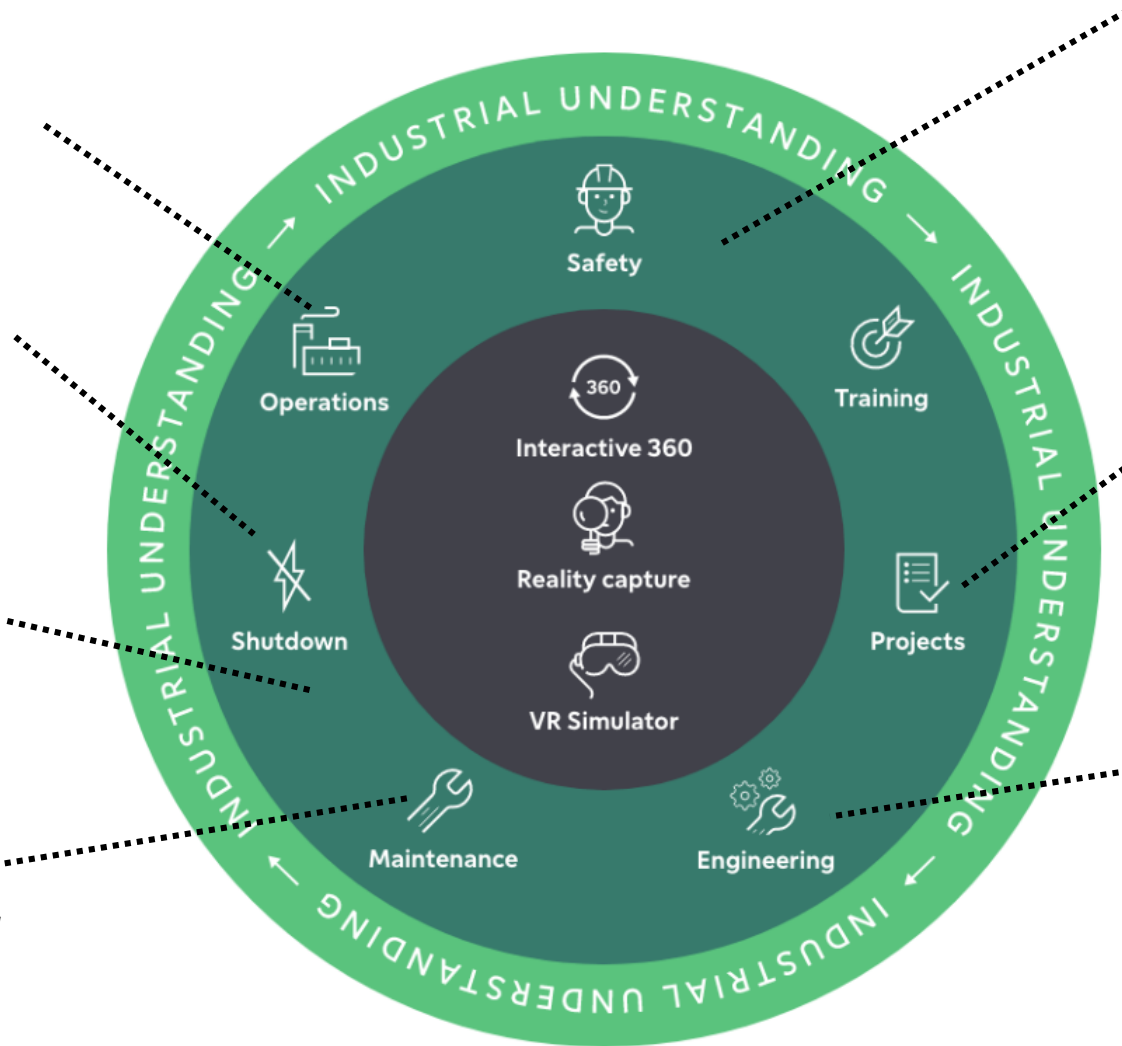
The improved understanding of the mill's current conditions and better situational awareness enables shutdown engineers to plant better for upcoming shadows and proactively propose solid improvements. Shutdowns are performed in time and budget without costly surprises.

## Shorter unplanned shutdowns

The improved situational awareness and immediate expert support help reduce the length of scheduled shutdowns. In case of unplanned shutdowns the fault is found and fixed faster when expert support contractors can visit the site remotely.

## Live expert support connection

Live remote assistance tools are connected to eSiteview to make experts easily available during trouble shooting and maintenance. Even when traveling to the site is not possible.



## Fast to set-up, easy to use

Just few days site visit is all you need to produce the “digital twin” of the physical mill with the possibility of taking measurements and exporting 3D data.. It is immediately available to support the collaboration between mill staff and external experts

## Realistic environment to support training

eSiteview provides a realistic environment where training material can be linked for better learning curve, better commissioning and faster ramp up of for the mill

## 100% as build data delivery

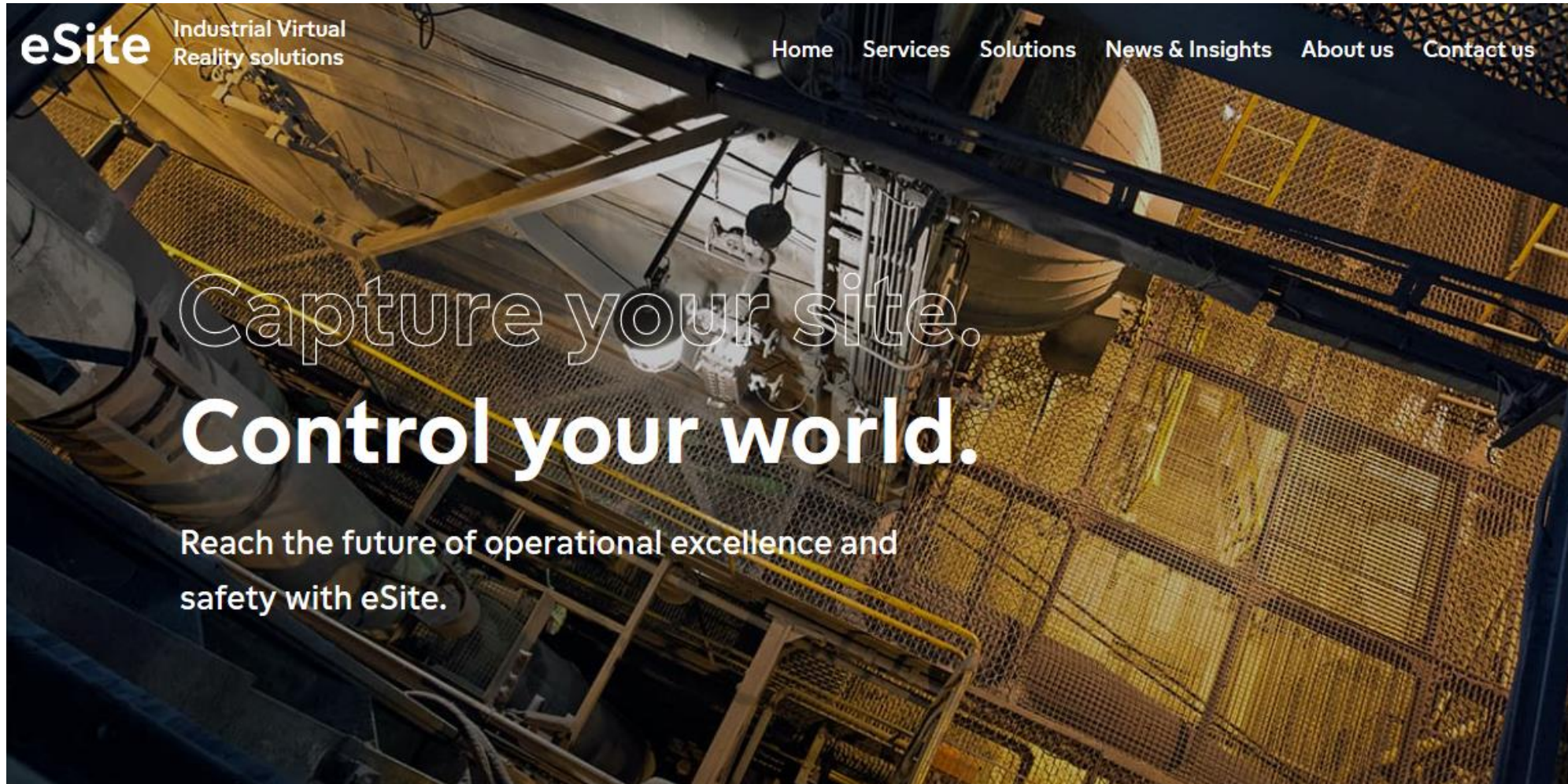
eSiteview reality capture performed in the end of the project saves money when delivering the “As Built” contractual milestone. It can also save from disputes during the guarantee period as the 100% accurate condition of the delivered mill are easily available.

## 100% accurate “As Is” input data for engineering

eSiteview is a fast and inexpensive way to capture the existing mill as input material when making winning proposals and to perform high quality pre-engineering. This reduces project risk and improves project profitability. The scanned 3D pointcloud can be imported to engineering tools and hours are saved from unnecessary 3D modelling from areas where 3D models are not necessarily needed.



Contact us for the live demo for your own team: [www.esitevr.com](http://www.esitevr.com)



The image is a promotional banner for eSite. It features a background photograph of an industrial facility with a complex network of pipes, walkways, and machinery. The text is overlaid on the left side of the image. At the top left is the eSite logo and the text 'Industrial Virtual Reality solutions'. At the top right is a navigation menu with links for Home, Services, Solutions, News & Insights, About us, and Contact us. The main headline reads 'Capture your site. Control your world.' Below this is a sub-headline: 'Reach the future of operational excellence and safety with eSite.'

eSite Industrial Virtual Reality solutions

Home Services Solutions News & Insights About us Contact us

Capture your site.  
**Control your world.**

Reach the future of operational excellence and safety with eSite.



# eSiteview solution – features

## USER EXPERIENCE

- Web and mobile user interface
- 360 panoramas
- Visualize and stream point cloud
- Measurement tool
- Modifiable Points of Interest (POI)
- Routing
- Layouts
- Map view
- API integration
- Secure hosted cloud (Azure)
- End user support
- Import/export (poi and point cloud)
- Mobile mapping

## Partner business model



## AVAILABLE INTEGRATIONS

- Engineering tools
- Maintenance management (SAP, Infor, Maximo)
- Plant process data with visualization components
- Training simulators

## ADDITIONAL MODULES

- Virtual plant tour feature
- Remote meeting feature
- Equipment list feature
- 360 image feature
- 360 video feature
- GIS geo reference feature
- Outside satellite map feature
- IoT data lake visualization feature
- Remote IoT sensors (temp, pressure, XX, YY)
- VR glasses feature
- AR glasses feature

# For more use cases and value propositions [www.esitevr.com](http://www.esitevr.com)

Visiting industrial sites remotely is faster and easier than ever!



**Plant owner/operator** → make a digital twin in one day

**Project manager** → digitize your project wherever it is

**Service provider** → become our partner and deliver higher value



29.10.2020 | INSIGHTS

## Successful outages with ZERO prior visits – Fact or Fiction?

Whenever a production facility stops its normal operations, it also stops generating revenues and starts increasing expenses. That's why, planned outages are a fundamental part of any plant's operational excellence. To avoid unnecessary losses, successful outages require months of preparation and planning before the actual downtime takes place. Plant staff and external contractors usually need to visit the plant several times before the actual outage takes place. There are three indicators during the outage process: the pre-outage indicators, the outage execution indicators, and [...]



3.9.2020 | INSIGHTS

## Three reasons why we digitize a power plant in one day

Just a year ago, full size plant digitization projects were reserved for the front-runner companies, that had the vision and will to make digital plants a competitive edge for them. Nowadays, however, COVID-19 has forced production plant owners to take measures to ensure critical operations, even when support staff and external contractors cannot visit the [...]

[Read more](#)



25.8.2020 | INSIGHTS

## Visiting industrial sites remotely is faster and easier than ever!

Together with partners, eSite rolls out a new service concept to digitize industrial plants and construction sites faster and easier than ever before. The new concept is created to digitize sites with a new 10X factor and is already available all-around in Finland. During times when travelling to a site is not the best option, eSite digitizes industrial plants, and construction [...]

[Read more](#)



21.8.2020 | NEWS

## The ball is rolling in Finland: Capture your site. Control your world.

eSite will take the third step on its roadmap to digitize industrial plants, construction sites and big facilities around the world. The new service concept will be launched on August 25th in Finland (eSite digitizes industrial sites faster than ever before). • Faster and more accurate digitization of industrial plants than ever before • Immediate [...]

[Read more](#)